

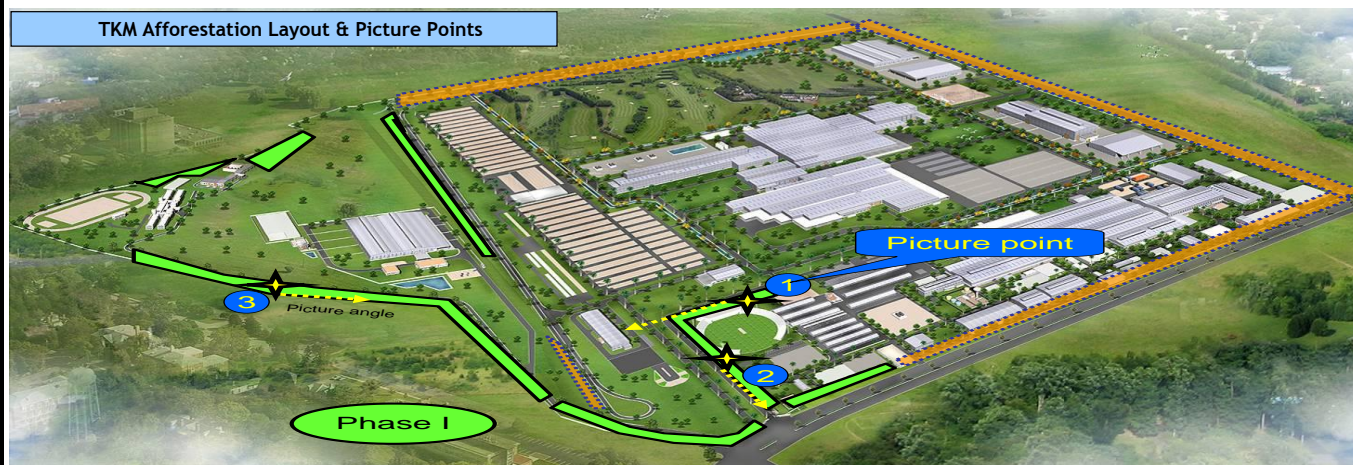
Afforestation Report < May' 11 >

Reporting Period: 1st ~ 31st May 11

32

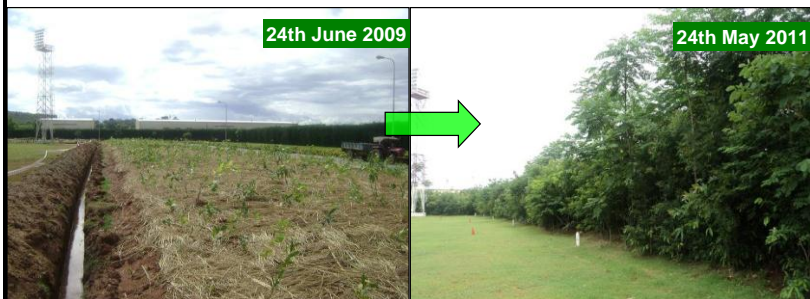
Affores 木木
www.afforestt.com

TKM Afforestation Layout & Picture Points

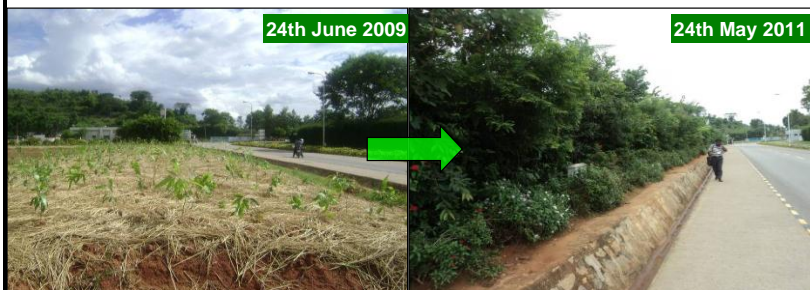


1) Photos Section

1.a) Cricket Ground (ref Quality Bldg)



1.b) Cricket Ground (ref. Gate #1)



1.c) Near TTTI (ref. Eucalyptus tree)

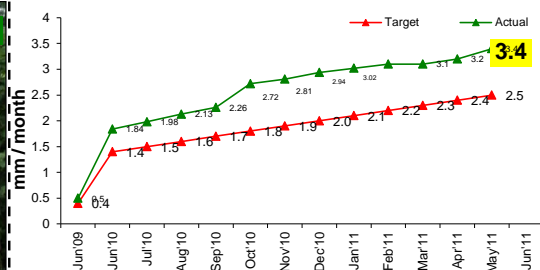


Legend: ○ - Good, X - Needs Improvement

2) KPI's Section

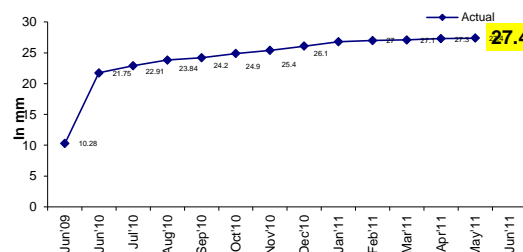
2.a) Height of Saplings

STATUS - ○



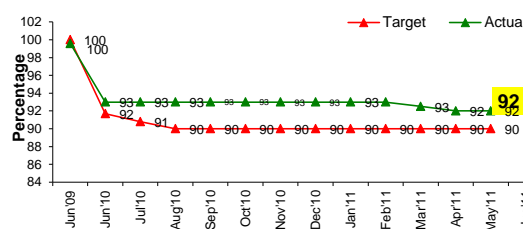
2.b) Size of Saplings

STATUS - ○



2.c) Survival Rate

STATUS - ○



Key Observations:

* Plants are blooming due to the effect of early south-west monsoon showers.

* Values shown above indicates the average of measurements from 5 sample mounds.